

googly eyes



Bianca Brand, *Blue Paradise*, Monotype, 74.5. x 53.5cm, 2019

Presented by

ELEVEN EDITIONS

Amé Bell, Bianca Brand, Norman Catherine,
Balekane Legoabe, Lebogang Mabusela,
Blonde Skulls, Jessica Webster

Googly Eyes is seeing and feeling with childlike wonder. Googly Eyes evoke the neon slime and glittering sticky hands, the scrawling spirals and chalky probing of gelatinous eyes and imaginary creatures. It happens somewhere deep within the gut, deep within the squishy parts, a space which slides over fingertips and tippy toes, the moist fishy leer in hundreds and thousands, the habitat-womb squeaking it's squelch, the springing off of fleshy gloop and downy sponge.

Produced with collaborating artists in his *Eleven Editions* print studio, Bevan de Weert's selection of prints for Googly Eyes, mirrors a global contemporary artistic turn to monstrously fluorescent and tactile form. The sighting and sightlessness of texture and surface in contemporary art, the creaturely gaze it manifests, is fast becoming a trope of the social media age in general. But exactly what it stands for, or is standing in for, is not quite a real place or time. It slithers on the surface of familiarity with and distance from embodied experience, our clumsy and emotive handling of object-worlds jammed inside emoji-signs and glowing ogling digital stickers. Optically and laughingly, social media meme-fies a current state of being. Perhaps this art acknowledges that being as opening into a creaturely life of infinite expansion and compressibility. And in that, the potential to begin it all again.

- Dr. Jessica Webster



googly eyes

A group exhibition presented by

ELEVEN EDITIONS

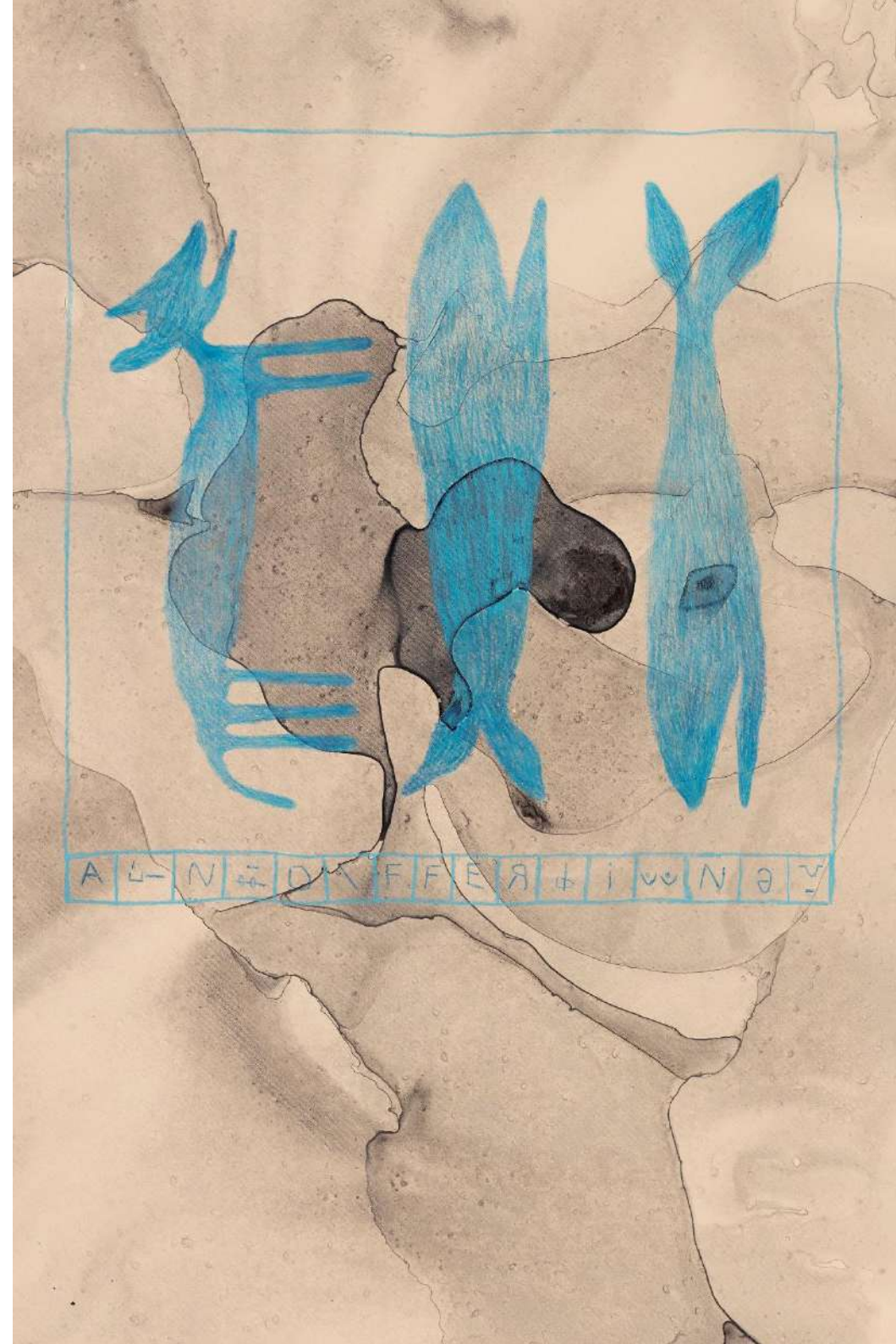
Featuring the works of Amé Bell, Bianca Brand, Norman Catherine, Balekane Legoabe, Lebogang Mabusela, Blonde Skulls, Jessica Webster

Googly Eyes is seeing as feeling with childlike wonder. Googly Eyes evoke the neon slime and glittering sticky hands, the scrawling spirals and chalky probing of gelatinous eyes and imaginary creatures. It happens somewhere deep within the gut, deep within the squishy parts, a space which slides over fingertips and tippy-toes, the moist fishy leer in hundreds and thousands, the habitat-womb squeaking it's squelch, the springing off of fleshy gloop and downy sponge.

To evoke Googly Eyes in word and image is less an escapist fantasy but a siren song of return to a visceral within. The approach to 'googliness' thus bears a parallel with the viral social media form of ASMR - autonomous sensory meridian response - most often performed online by a woman tickling her long nails over brittle surfaces, or squeezing squealie bubbly plasticine objects while she stares meaningfully into the camera lens-viewer's own eyes. The extreme popularity of ASMR, its provocation to engage in an embodied titillation of gazing and being gazed at, is interesting for the paradox it presents to the subjectivising distance, even alienation, that social media is otherwise framed as invoking.

Produced with collaborating artists in his Eleven Editions print studio, Bevan de Wet's selection of prints for Googly Eyes, mirrors a global contemporary artistic turn to monstrously florescent and tactile form. The sighting and sightlessness of texture and surface in contemporary art, the creaturely gaze it manifests, is fast becoming a trope of the social media age in general. But exactly what it stands for, or is standing in for, is not

GALLERY 2



quite a real place or time. It slithers on the surface of familiarity with and distance from embodied experience, our clumsy and emotive handling of object-worlds jammed inside emoji-signs and glowing ogling digital stickers. Optically and laughingly, social media meme-fies a current state of being. Perhaps this art acknowledges that being as opening into a creaturely life of infinite expansion and compressibility. And in that, the potential to begin it all again.

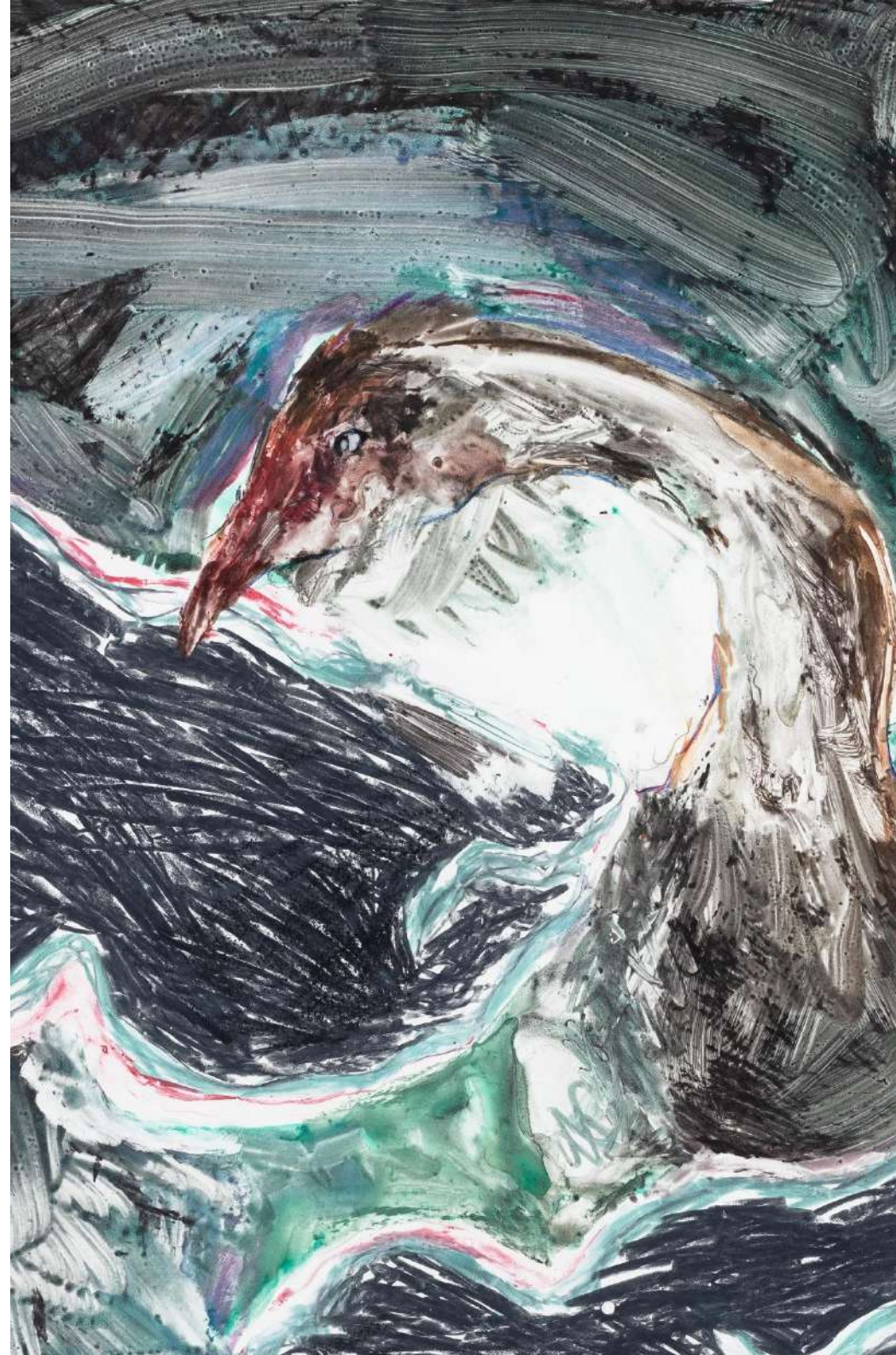
- Written by Dr Jessica Webster

Eleven Editions is an artist run printmaking studio, founded by Bevan de Wet in 2016, and located in the historical downtown district of Ferreirasdorp in Johannesburg.

Eleven Editions is a collaborative printmaking workshop that works with numerous South African and international artists in publishing and developing various print and paper-based projects. The studio has a primary focus on etching, relief printing and various monoprinting media, including oil and watercolour. The studio holds a strong focus on experimentation and combining various disciplines.

De Wet has collaborated with a number of artists including Doris Bloom, Bianca Brand, Norman Catherine, Nolan Oswald Dennis, Heidi Fourie, Andrew Kayser, Athenkosi Kwinana, Balekane Legoabe, Lebogang Mogul Mabusela, Sue Martin, Lehlogonolo Mashaba, Walter Oltmann, Tamara Osso, Chelsea Selvan, Clive van den Berg, Diane Victor, Jessica Webster and many more. The studio hosts regular workshops including including etching, relief, monoprinting, marbling and bookbinding.

GALLERY 2







Amé Bell, *le tigre*, watercolour monotype, 63 x 53.5cm, 2024, Framed



Amé Bell, *a good nose*, watercolour monotype, 63 x 53.5cm, 2024, Framed



Amé Bell, *only here for breakfast*, watercolour monotype, 63 x 53.5cm, 2024, Framed



Amé Bell, *Peek-a-boo*, watercolour monotype, 56 x 59cm, 2024, Framed



Bianca Brand, *Blue Paradise*, monotype, 74.5 x 53.5cm, 2019, Framed



Bianca Brand, *Business Sock*, etching, 47.5 x 46cm, Ed 1/10, 2019, Framed



Bianca Brand, *Jungle Boogie*, etching, 47.5 x 46cm, Ed 1/10, 2019, Framed



Bianca Brand, *Ghoul Fest I*, monotype, 57 x 76cm, 2019, Framed





Bianca Brand, *Glass Face*, monotype, 74.5 x 53.5cm, 2019, Framed



Bianca Brand, *Fallen Mummy*, monotype, 57 x 76cm, 2019



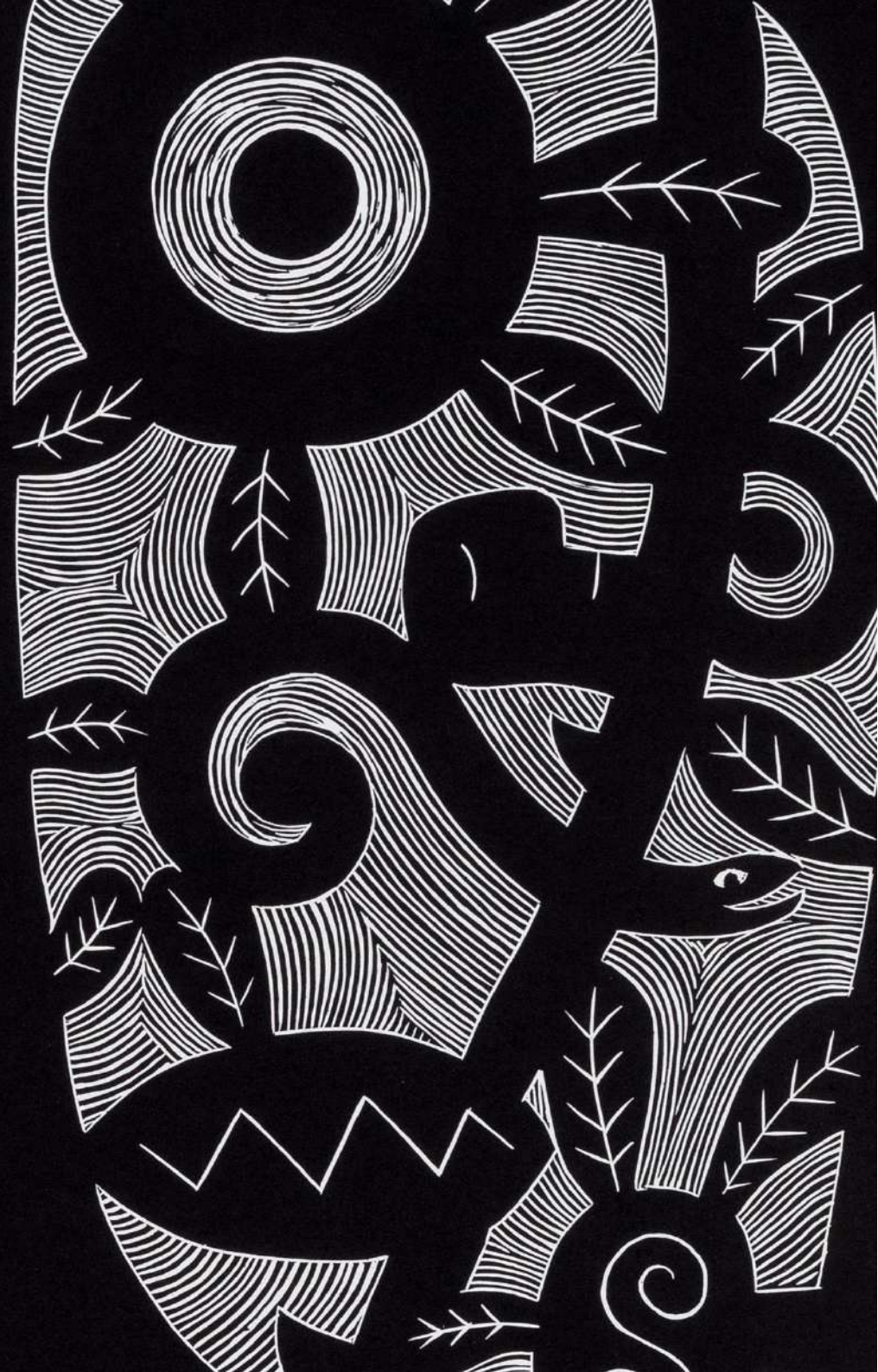
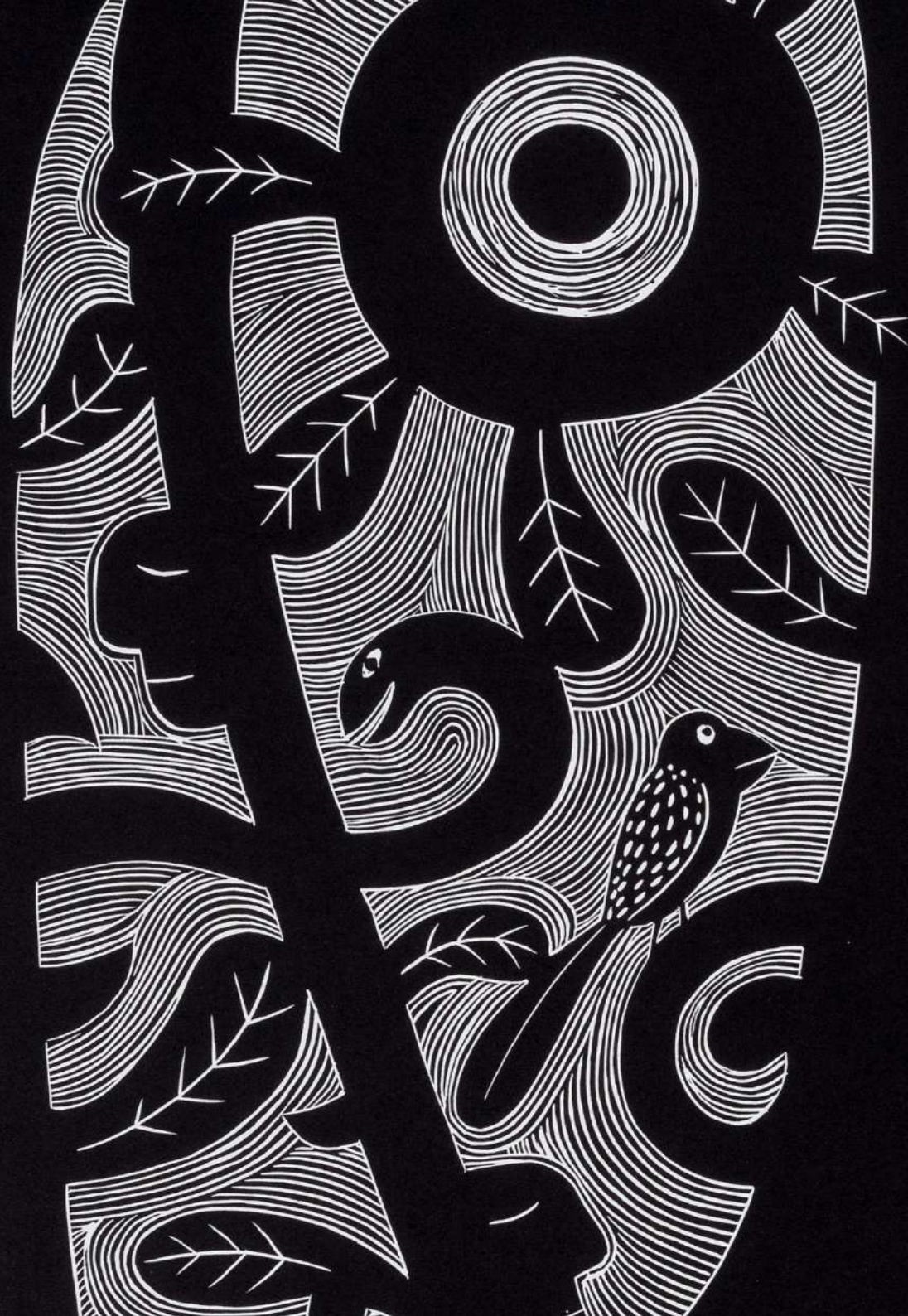
Bianca Brand, *Salt and Lake Water IV*, monotype, 76 x 57cm, 2019



Norman Catherine, *Bovine Advisor*, linocut, 125 x 90cm, Ed 6/25, 2024,
Framed



Norman Catherine, *Spiritual Advisor*, linocut, 125 x 90cm, Ed 6/25, 2024, Framed





Balekane Legoabe, *Code I*, watercolour monotype, 41 x 34cm, 2023, Framed



Balekane Legoabe, *Code II*, watercolour monotype, 41 x 34cm, 2023, Framed



Balekane Legoabe, *field day*, variable colour etching with unique drawn element, 77 x 56.5cm, EV 1/9, 2023, Framed



Balekane Legoabe, *Sacred Chats III*, watercolour monotype, 77 x 56.5cm, 1/1, 2024, Framed



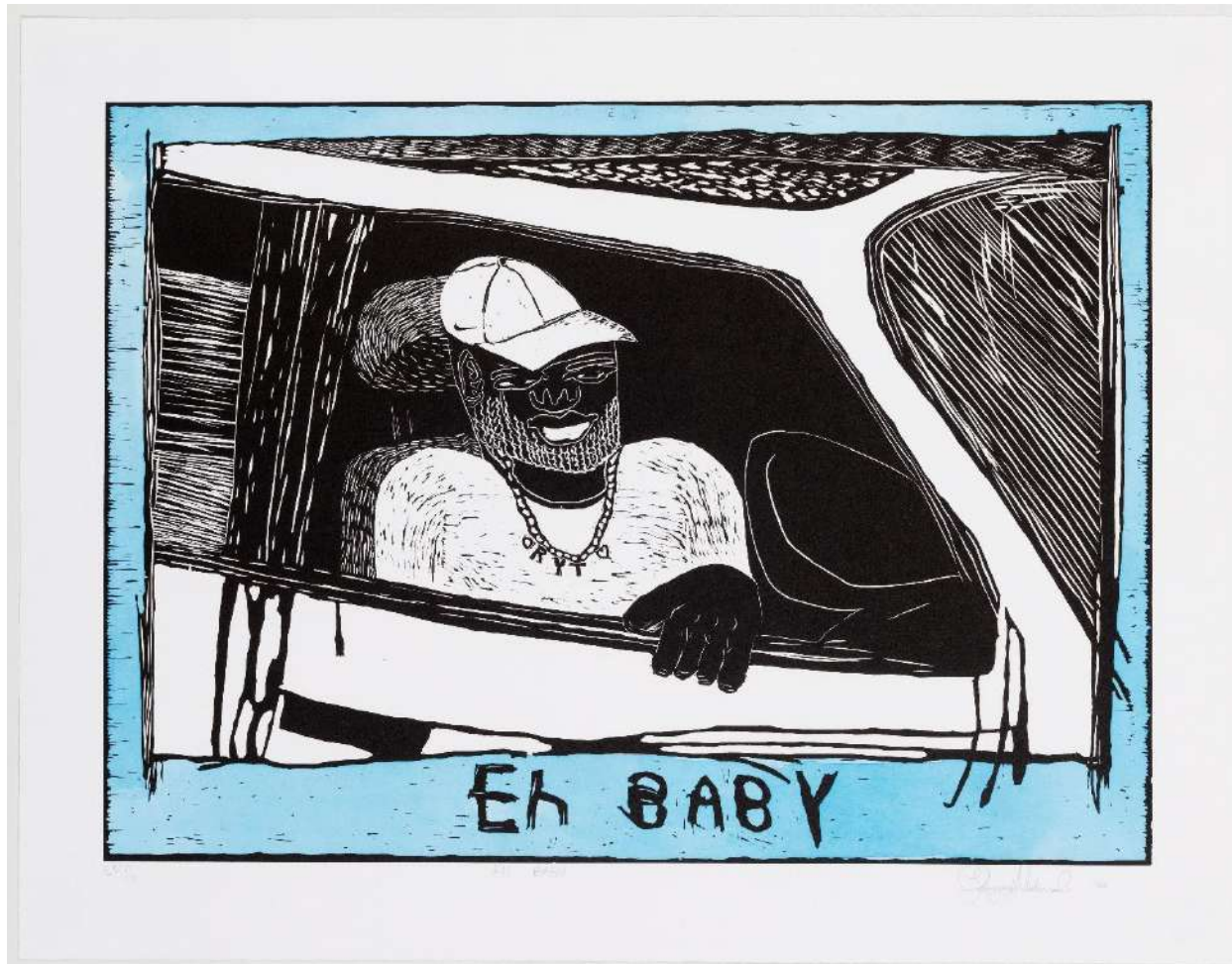
Balekane Legoabe, *Sacred Chats I*, watercolour monotype, 77 x 56,5cm,
1/1, 2024



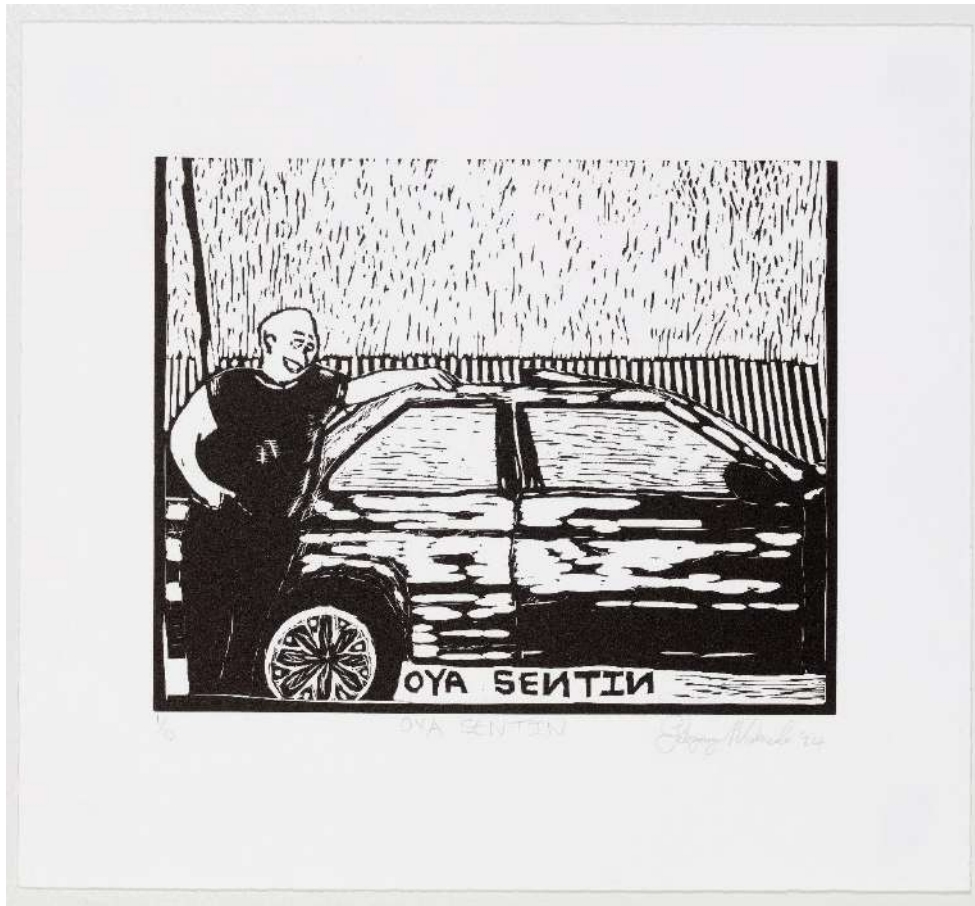
Balekane Legoabe, *Wonder again*, etching with unique chine-collé, 41 x 34cm, EV Ed 5/7, 2023, Framed



Balekane Legoabe, *Pool*, etching, 41 x 34cm, Ed 5/9, 2023



Lebogang Mabusela, *Eh Baby*, linocut with hand colouring, 56 x 72cm, EV Ed 3/10, 2024, Framed



Lebogang Mabusela, *Oya Sentin*, linocut, 38 x 42cm, Ed 1/10, 2024, Framed



Lebogang Mabusela, *Uhlal iRing Makoti*, linocut, 38 x 42cm, Ed 1/10, 2024, Framed



Lebogang Mabusela, *A Frivolous*, monotype, 75 x 57cm, 2021



Lebogang Mabusela, *Bleeding on your Loved ones*, monotype, 75 x 57cm, 2021



Blonde Skulls, ...*face*, watercolour monotype, 41 x 34cm, 2024, Framed



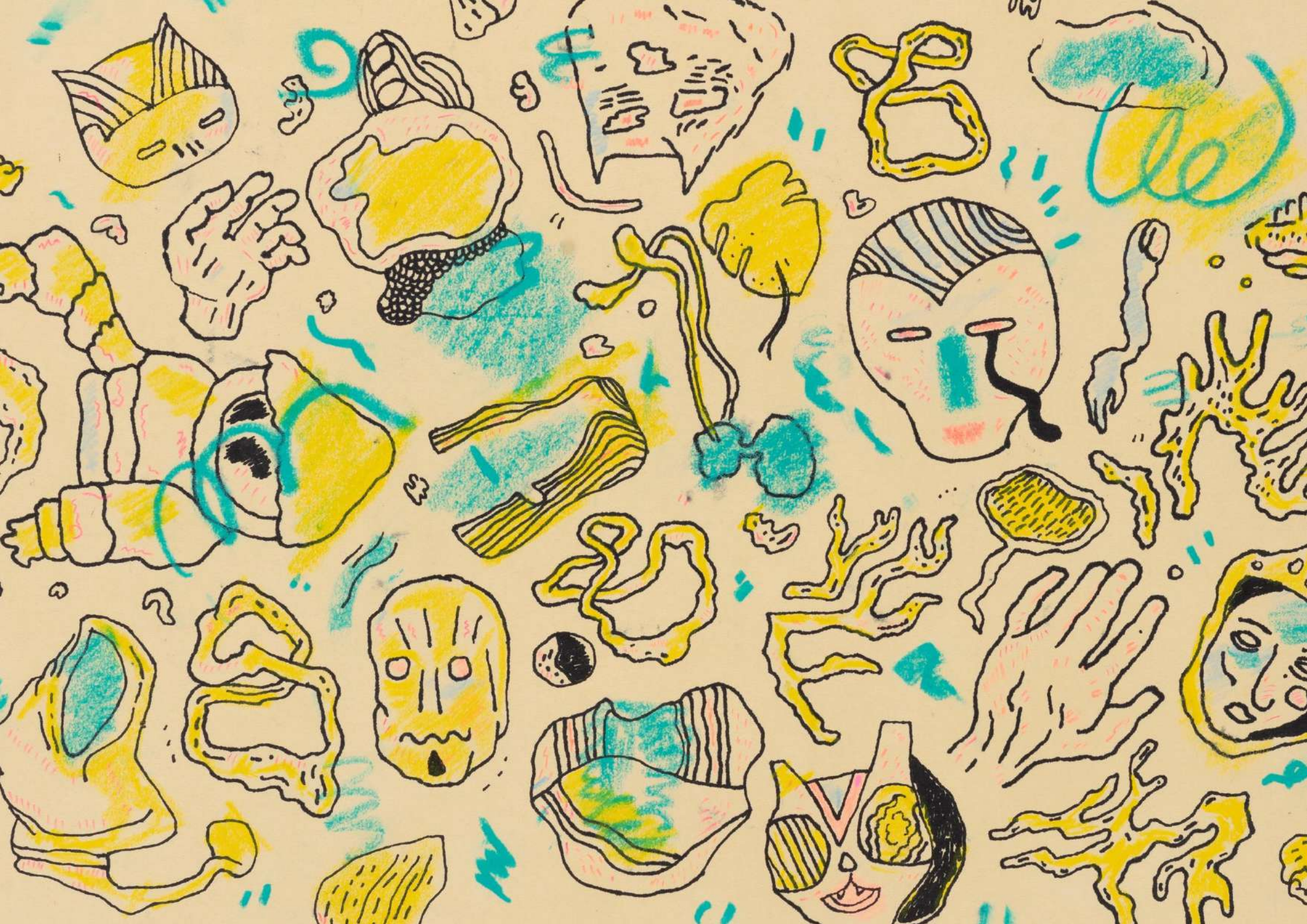
Blonde Skulls, *Aphantasia*, watercolour monotype, 41 x 34cm, 2024, Framed



Blonde Skulls, *La Doom*, watercolour monotype, 41 x 34cm, 2024, Framed



Blonde Skulls, *Holocene*, ink and watercolour with chine-collé, 46 x 56cm, 2024, Framed





Blonde Skulls, *Spider Bunny*, watercolour monotype, 68 x 53.5cm, 2024, Framed



Blonde Skulls, *Googly*, watercolour monotype, 41 x 34cm, 2024



Blonde Skulls, *The Looking Council*, watercolour monotype 68 x 53,5cm, 2024



Jessica Webster, *Untitled (Bird)*, watercolour monotype, 65 x 56.5cm, 2021, Framed



Jessica Webster, *Untitled (Amber Bear I)*, watercolour monotype, 36 x 38.8cm, 2021, Framed



Jessica Webster, *Untitled (Amber Bear II)*, watercolour monotype, 36 x 38.8cm, 2021, Framed



Jessica Webster, *Untitled (Intimate Moments)*, linocut with hand colouring, 56.5 x 75.5cm, Ed 6/10, 2021, Framed



Jessica Webster, *Untitled V (Flowers and Lizards)*, etching with unique pencil colour and chine-colle, 51.5 x 61.5cm, 2021, Framed



Jessica Webster, *Untitled (Bird in Flight)*, etching, 51.5 x 62cm, EV 2/7, 2021



Jessica Webster, *Untitled (Bird in Flight)*, etching, 51.5 x 62cm, EV 5/7, 2021



Jessica Webster, *Untitled (Metamorphosis in Colour I)*, etching with unique pencil colour and chine-collé, 63.5 x 49cm, 2021





googly eyes

Amé Bell, Bianca Brand, Norman Catherine,
Balekane Legoabe, Lebogang Mabusela,
Blonde Skulls, Jessica Webster

GALLERY 2



eleven editions